

HEALTH FORUM

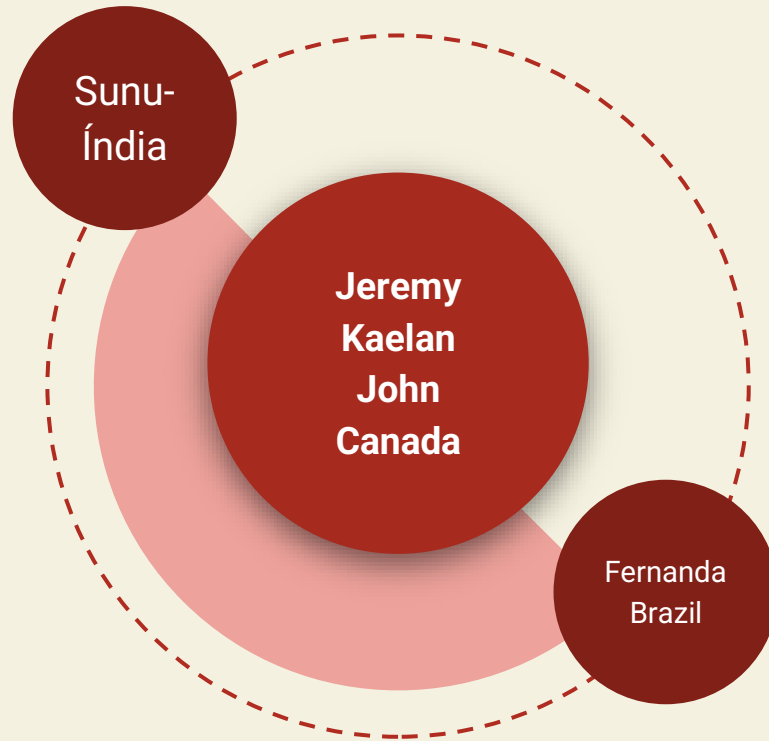


COVID-END ORAL HEALTH

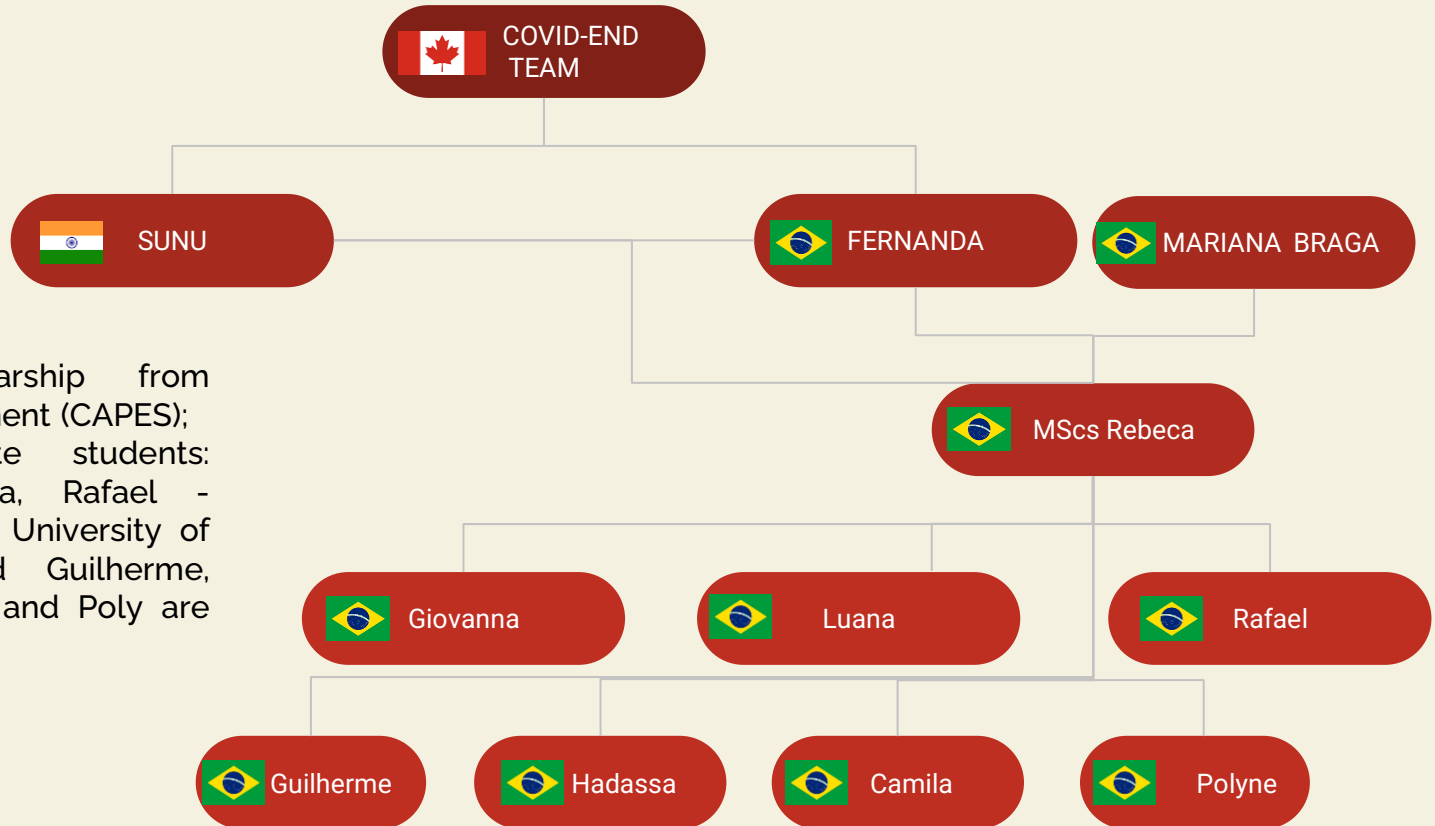
An inventory of best available evidence synthesis of oral health related to COVID-19

APRIL 7, 2022

To create a group- to obtain more visibility for oral health in the COVID END project



Our team



- Rebeca- Scholarship from Brazilian Government (CAPES);
- 7 undergraduate students: (Giovanna, Luana, Rafael - Scholarship from University of Sao Paulo and Guilherme, Hadassa, Camila and Poly are volunteers.

Our team meetings routine



International team

Sunu, Fernanda, Rebeca



Brazilian supervision

Fernanda, Rebeca



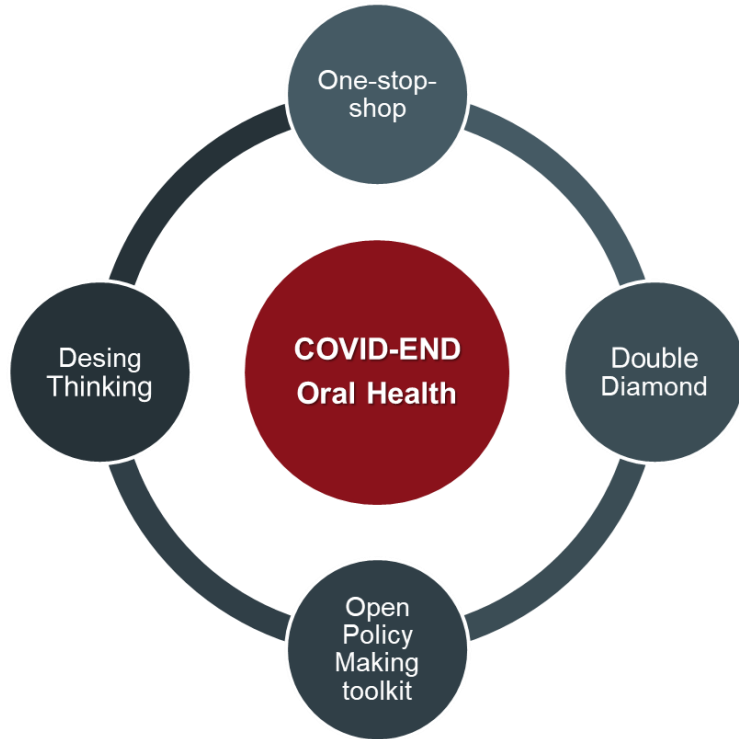
Brazilian execution

Rebeca, Rafael, Luana, Giovanna,
Guilherme, Hadassa, Polyne,
Camila.

SEARCH - DATABASES



Validation process through innovation



16

Dentists and decision makers

8

Countries

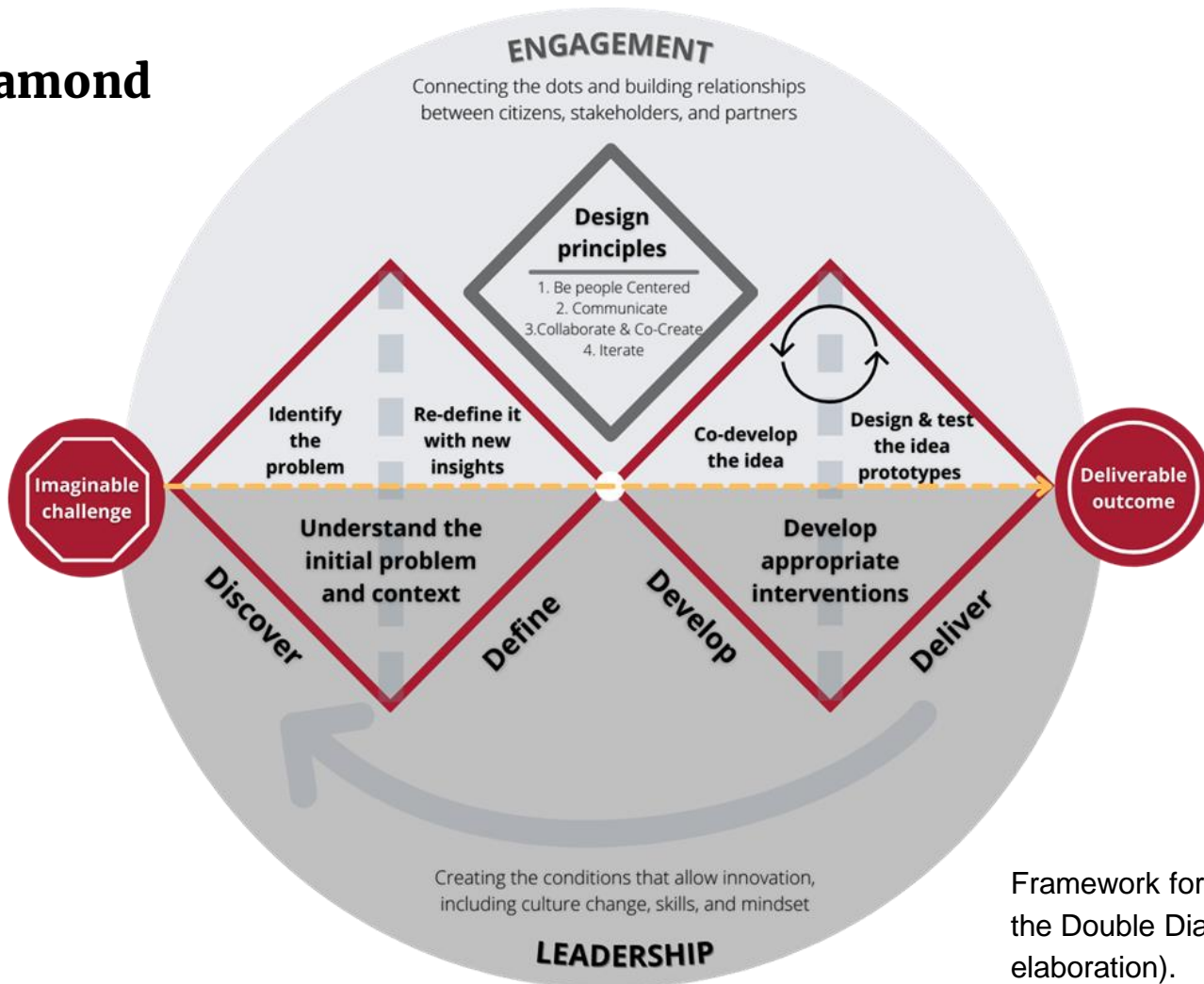
Brazil, Bolívia, Colombia, Porto Rico, England, Egypt, India, Oman

4

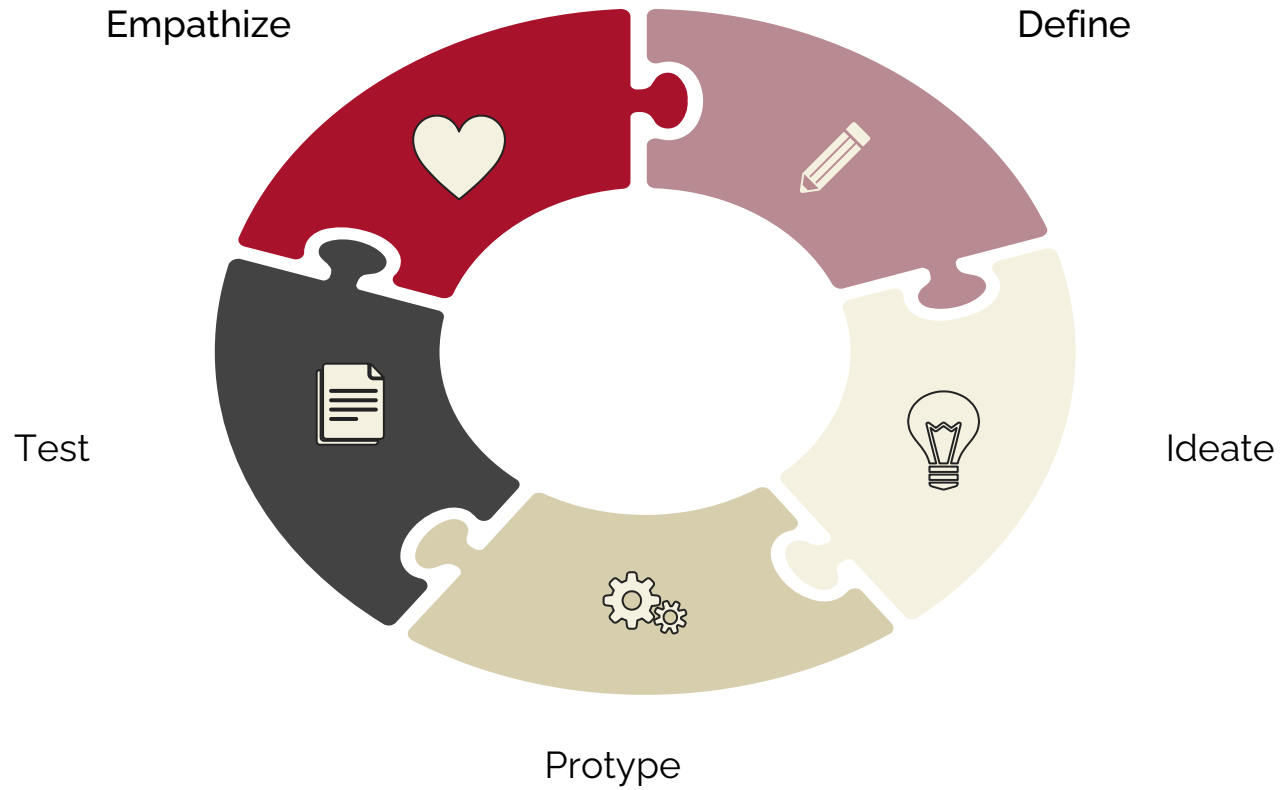
Continents!

America, Europe, Asia, Africa

Double Diamond



Framework for Innovation adopting the Double Diamond (Source: self-elaboration).



Design Thinking- was included in our routine

Roadmap

COVID-END Oral Health
taxonomy

1

1st COVID-END Oral
Health E-book

3

Evidence
GAPMAP

5

Publishing at COVID-
END

2

COVID-END Oral Health
Update

4

Methodological articles:
Taxonomy, GAP MAP,
Comparison.
Covid-end OH E-Book 2

6

COVID-END Oral Health taxonomy of public-health measures, clinical management of COVID-19, health-system arrangements, economic and social responses, and Dentistry Education

Program and service areas

Public-health measures

• Infection prevention

- Personal protective equipment
 - Health consequences of new protocols
 - Recycle protocols for gowns and other personal protective equipment
 - Masks
 - Effectiveness of personal protective equipment in dentistry
 - New protocols about personal protective equipment for dental offices
- Aerosol generating procedures
 - Mitigation of Aerosol Generating Procedures in Dentistry
 - Procedures classified as bio-aerosols sources and contamination in dental offices
 - Time between appointments
- Disinfection/ sterilization
 - Mouth rinses, antimicrobial agents
 - Wearing masks
 - Disinfection and infection prevention protocols
 - Disinfecting surfaces and facilities
 - New sterilization methods for dental offices

• Infection control

- Health workplace
 - Routes of transmission in Dental Care
 - Environmental Detection of SARS-CoV-2
 - SarCov-2 infection among healthcare workers
 - Infrastructure planning and resource allocation in dentistry
 - Layout adaptations
 - Electronic medical records and technology in oral health
 - Suspension of school dental programs
 - Changing home and community care procedures
 - Biosafety Measures at the Dental Office

- Changes in health workers service delivery
 - Sequencing of services re-starting, by sector, conditions, treatments (including diagnostics), and populations
 - Managing Emergency and elective non-emergency procedures and delaying return visits
 - Patient-mediated interventions

Clinical management of COVID-19 and pandemic-related Oral health issues

• General and specialty management of oral health and related impacts

- General
 - Acute care dental conditions
 - Dental materials for possible use during the COVID-19
 - Dental staff working outside dental area with covid-19 patients (swab tests, follow up and hospital care)
 - Strategies to overcome PPE-related communication challenges
 - Combatting oral-health related misinformation
 - Dentists' knowledge, perceptions and attitude during covid-19 pandemic
 - Laser therapy
 - Ozone therapy
- Teledentistry
 - The application of teledentistry in geriatric settings
 - Usability and effectiveness of teledentistry
 - Remote management of existing conditions
 - Online health education (collective and individual)
- Patients
 - Suspension of elective treatments
 - Suspension of school dental programs
 - Fear of patients from contamination in the dental office
 - Patient behaviors
 - Domestic violence, abuse
 - Dental trauma

- Oral Microbiology
- Nutritional changes and oral health impact

○ Management/guidelines/recommendations according to dental specialties

- Dental public health
 - Oral health prevention and promotion actions
- Endodontics
 - Protocols to reduce COVID-19 exposure during endodontic treatment
- Hospital
 - Dentists Improving Oral Hygiene in intensive care units
- Oral and maxillofacial radiology
 - Protocol changes for user protection
- Oral and maxillofacial surgery
 - Prevention and impacts of COVID-19
 - Moulding for pre-surgical orthopaedics in cleft lip and palate patients
- Oral medicine / Oral and maxillofacial pathology
 - Olfactory and gustatory symptoms and salivary compositional changes
 - SARS-CoV-2 infection in the oral cavity tissues and cells
 - Oral manifestations in COVID-19 infected patients
 - Oral disorders related to SARS-CoV-2 in children
 - Mucormycosis and post Covid-19 oral manifestations
 - Association between oral diseases and the severity and mortality of COVID-19
 - Saliva Studies
- Orofacial pain
 - Temporomandibular joint dysfunction increase
- Orthodontics and dentofacial orthopedics
 - Aerosol generating procedural risks and mitigation strategies in orthodontics

- Cross-infection in orthodontic practice

- Pediatric Dentistry
 - Clinical practice guidelines and management
 - Impact of COVID-19 on dental prophylaxis in child programs
- Periodontics
 - Risk of contamination by dental periodontal procedures
 - Pre-procedural Mouth Rinses in Reducing Aerosol Contamination During Periodontal Prophylaxis
 - Periodontal Diseases and COVID-19 Severity
- Prosthodontics
 - Increased demand
 - Prosthesis disinfection, prosthetic infection control and protection of technical workers
- Restorative dentistry
 - Protocol changes
 - Dental caries management with non-aerosol restorative treatment
- Special care dentistry
 - Pregnant women
 - Medically compromised patients (diabetes, hypertension, etc.)
 - Elderly
 - Children and adults with disabilities
 - Oral cancer patients
- Forensic Dentistry
 - Infection control methods in forensic dentistry

Health-system arrangements / Economic and social responses

○ Delivery arrangements

- Workflow
- Triage protocols- risk classification
- Training to avoid transmission risk in the dental office
- Specialty service relocation
- Changes to oral health emergency procedures

• Governance arrangements (decisions and protocols)

- Policy authority
 - Centralization/decentralization of policy authority
 - Adhering to the international health regulations
 - organizations
- Organizational and professional authority
 - Guidance of dental-health
- Financial arrangements for oral health
 - Budget adjustments for oral health care in federal, state, and city levels

• Economic and social consequences to private and public dentistry

- Public policy issues
 - Managing suppressed demand in oral health due to the suspension of elective appointments during the COVID-19 pandemic
- Dental staff
 - Concerns of dental and oral health workers and the coping strategies
 - Economic impacts on dental practices
 - Biosafety expenditure
 - Dentists' mental health
 - Covid-19 Infection, Illness and Deaths Among Healthcare Workers

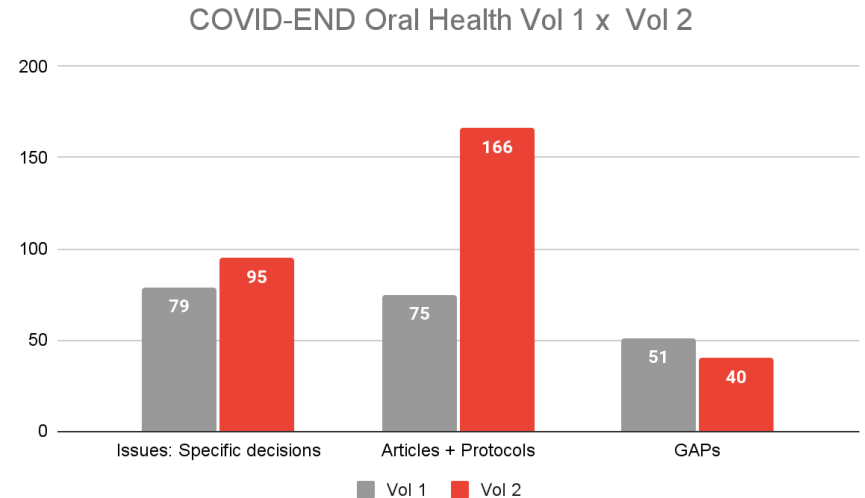
Dentistry Education

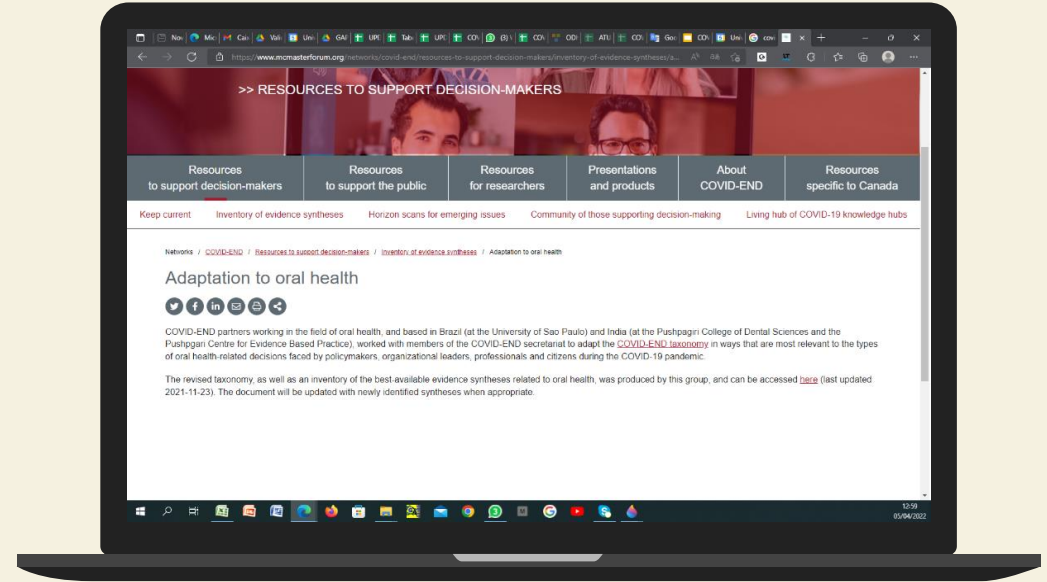
- Facilities alterations in dental schools
 - Construction and physical layout changes
 - Circulation flow
- Pedagogical issues
 - Curriculum adaptations
 - Broadband internet access (inequality of access to internet / computers)
 - Psychological health of dental students
 - Collective clinics
 - Covid-19 impacts in the teaching-learning process in dental education
- Other Research matters
 - Evidence mapping and quality of published dental literature

COVID-END Oral Health 1 vs 2

Table 1 - Issues, articles, protocols and GAPS per domain

Domains	N of Issues		Articles		Protocols		Gaps	
	Vol 1	Vol 2	Vol 1	Vol 2	Vol 1	Vol 2	Vol 1	Vol 2
	Public-health measures	19	23	24	32	10	18	9
Clinical management of COVID-19 and related health issues	41	50	8	31	27	67	27	20
Health-system arrangements	12	14	1	7	3	5	10	8
Economic and social responses/education	7	8	1	4	1	2	5	5
Total	79	95	34	74	41	92	51	40





Adaptation to oral health

Access the full COVID-END Oral Health
scan the QR Code.



ORAL HEALTH

A team of passionate people working to address COVID-19 oral health challenges by an innovative approach

First Edition

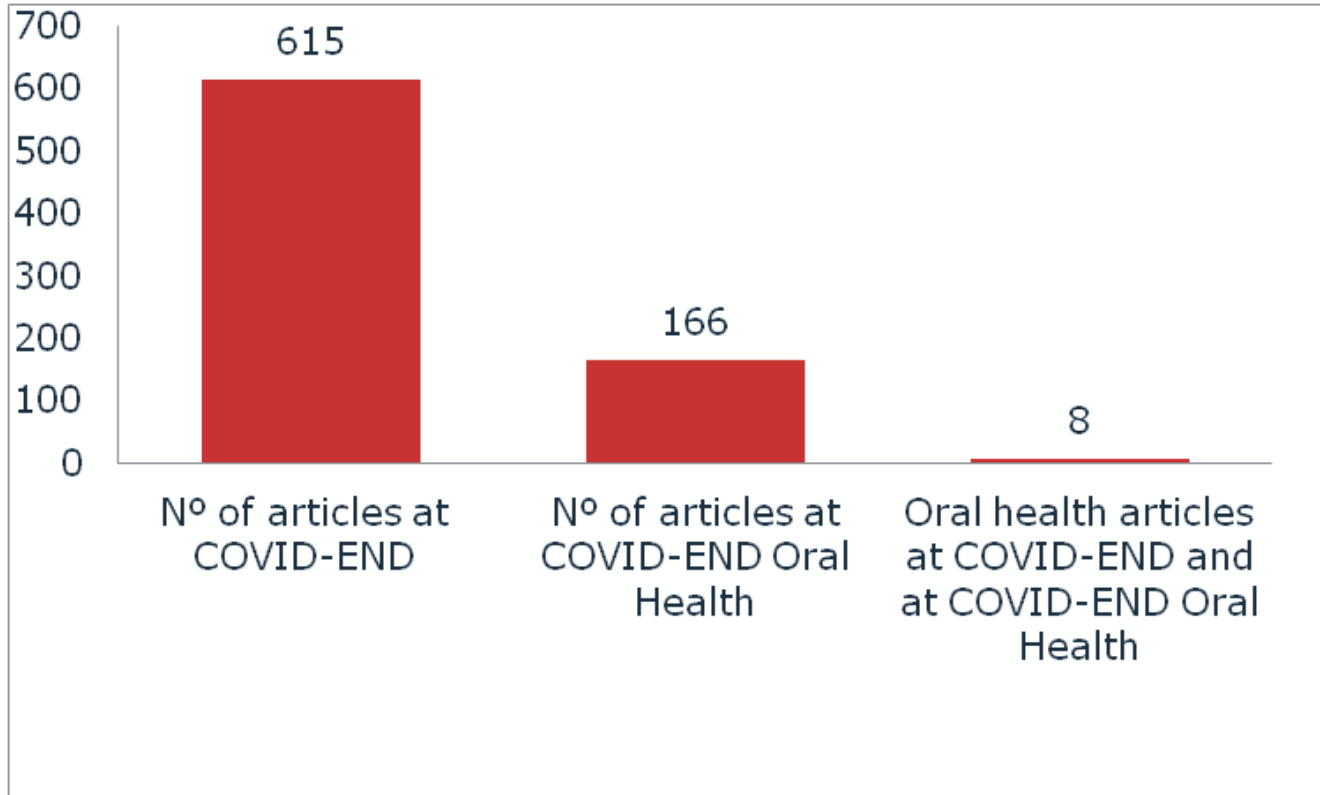
English, Español and Português.

NOVEMBER 2021
Vol. 1



*Access COVID-END Oral Health E-BOOK
scan the QR Code.*

COVID-END vs COVID-END Oral Health



Roadmap

COVID-END Oral Health
taxonomy

1

1st COVID-END Oral
Health E-book

3

Evidence
GAPMAP

5

Publishing at COVID-
END

2

COVID-END Oral Health
Update

4

Methodological articles:
Taxonomy, GAP MAP,
Comparison.
Covid-end OH E-Book 2

6

Analysis

ORAL HEALTH IS HIDDEN

Thematic one stop shops can insert strategic themes in the political agenda



THE INNOVATION

It allowed us to bring our solutions closer to the needs of those who suffer from the problem



Allow specific searches and greater visibility of the topic for decision makers

THEMATIC ONE STOP SHOPS



It is possible that other themes are hidden

THE NEED TO DEVELOP SPECIFIC TAXONOMIES



Team Presentation



Fernanda Carrer

PHD, PROFESSOR, DENTIST

School of Dentistry University of São Paulo / EVIPORALHEALTH Center



Mariana Braga

PHD, PROFESSOR, DENTIST

School of Dentistry University of São Paulo / EVIPORALHEALTH Center



Rebeca Cardoso Pedra

DENTIST, MSC

School of Dentistry University of São Paulo / EVIPORALHEALTH Center



Sunu Alice Cherian

DENTIST/ LECTURER

Pushpagiri College of Dental Sciences, Pushpagiri Center for Evidence-based practice (JBI Affiliated Centre for Excellence)



Camila Nakashima

Undergraduate Student



Guilherme Rocha

Undergraduate Student



Luana Brisolla

Undergraduate Student



Rafael Martins

Undergraduate Student



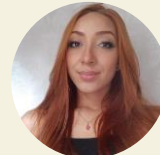
Giovanna Bello

Undergraduate Student



Hadassa Pieri

Undergraduate Student



Polyne Franco

Undergraduate Student

Thanks!

ANY QUESTIONS?



You can find us at:
fernandacsa@usp.br
djohn30@rediffmail.com
rebecapedra@usp.br