



National Collaborating Centre
for Methods and Tools

Centre de collaboration nationale
des méthodes et outils



Racing against COVID-19: Rapid responses to equip public health with evidence for COVID-19

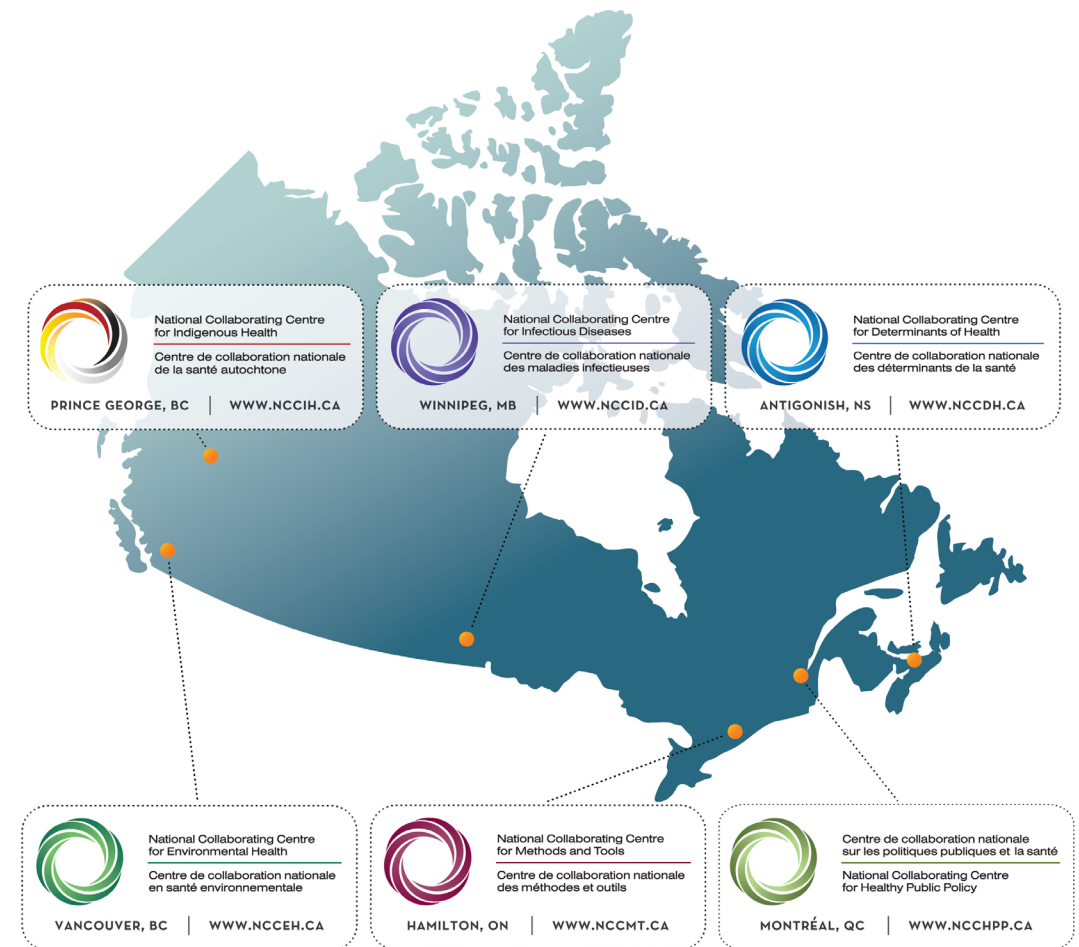
Maureen Dobbins, RN, PhD

COVID-END Partners Meeting

March 4, 2021

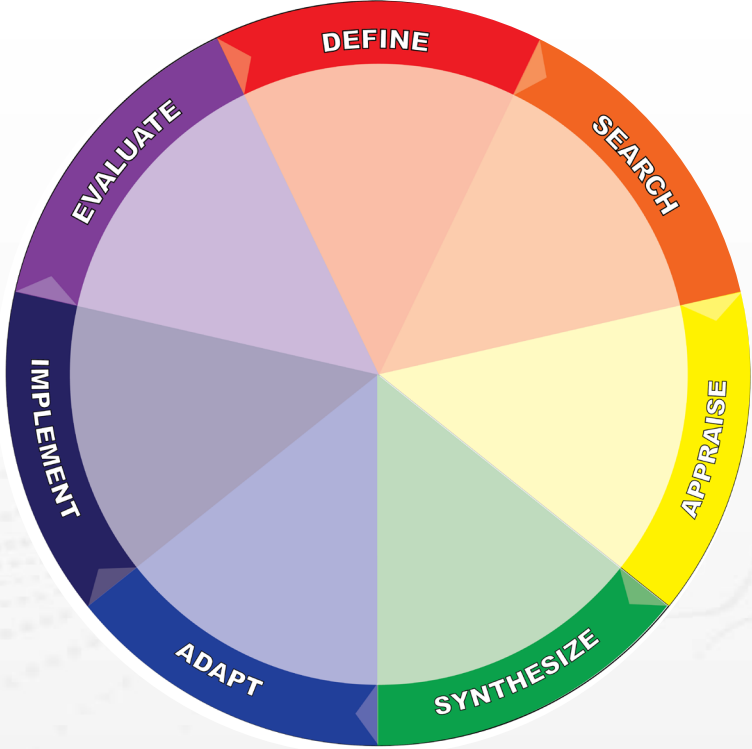
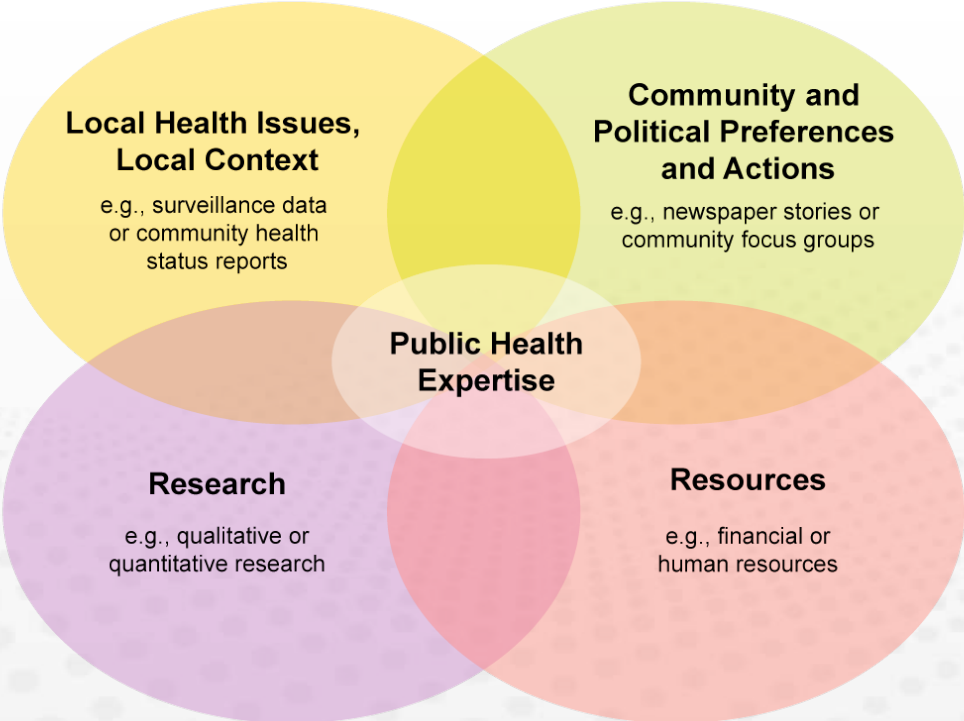
The National Collaborating Centre for Methods and Tools

- Encourages and scales evidence-informed decision making
- Provides high-quality resources, real world training and practical mentorship



Evidence-Informed Decision Making (EIDM)

The process of **distilling** and **disseminating** the best available evidence from research, context and experience, and using that evidence to **inform** and **improve** public health practice, programs and policy.



EIDM during COVID-19

NEED

CAPACITY

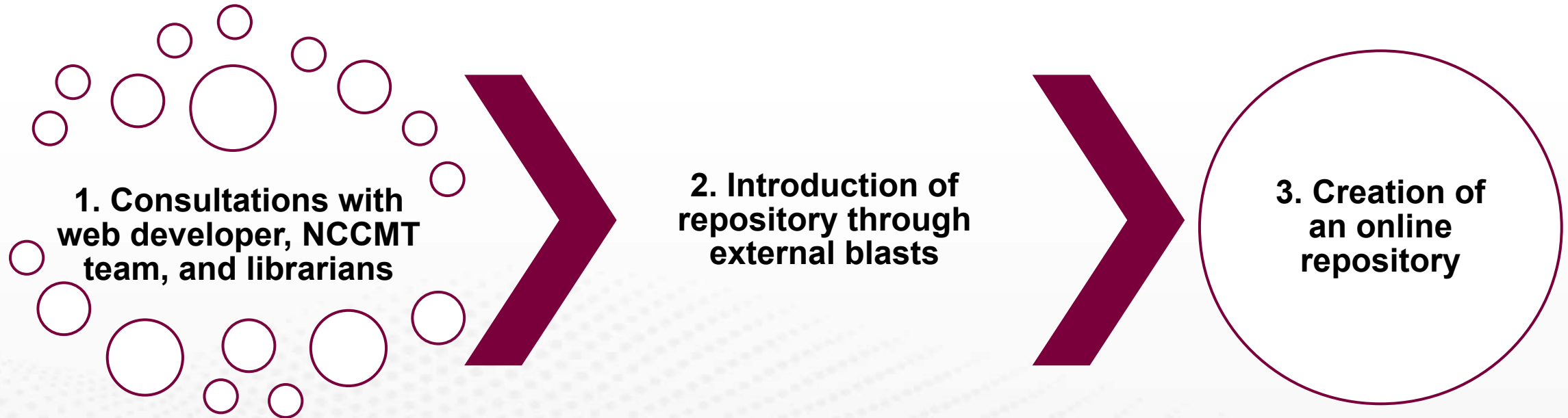


Rapid Review Repository



- Urgent need for synthesized evidence
 - Common questions
 - No centralized coordination of reviews across 75+ Canadian public health jurisdictions
-
- Rationale
 - Centralized database
 - Reduce duplication
 - Facilitate connections between reviewers
 - Enhance sharing of evidence

Creating the Repository



Impact

- COVID-19 Rapid Evidence Reviews: nccmt.ca/covid-19/covid-19-evidence-reviews
- 50 submissions within first month
- > 250 submissions total
- 44 groups across Canada and internationally

The screenshot displays the website for the National Collaborating Centre for Methods and Tools (NCCMT) COVID-19 Rapid Evidence Reviews. The header includes the NCCMT logo and navigation links: HOME, COVID-19, TRAINING, TOOLS, KNOWLEDGE REPOSITORIES, IMPACT, ABOUT US, and a SUBSCRIBE TO NEWSLETTER button. The main content area is titled "COVID-19 Rapid Evidence Reviews" and contains introductory text, a "Share your Evidence Review Topic" section, and a "Support for Evidence Reviews" section. A search bar is located below the main text. The search results section shows "Showing 21-40 (of 216 results)" and includes a list of results with filters on the left. The first result is "Protective Factors for Indigenous Communities" and the second is "Schools measures on COVID-19".

COVID-19 Rapid Evidence Reviews

It is critical for public health organizations to work together across jurisdictions during this challenging time and share our efforts in response to COVID-19. To minimize duplication of efforts and facilitate collaboration within public health across Canada, the National Collaborating Centre for Methods and Tools has collected research questions for rapid evidence reviews currently in development.

Share your Evidence Review Topic

Are you or your organization completing evidence reviews on topics related to COVID-19? We encourage you to share your research questions here to reduce duplication and allow collaboration with others across the country. Please complete the [submission form](#) and include your contact information. Submissions will be added to the list below within approximately 30 minutes.

Support for Evidence Reviews

For guidance on completing an evidence review, please see the [Rapid Review Guidebook](#). Staff at the NCCMT are available to help with development of research questions and search strategies, and direct you to search strategies developed by medical librarians. Staff may be able to contribute to your team's title screening or quality appraisal processes. Please [email us](#) for more information.

The NCCMT is providing this platform as a public service. Inclusion of any specific report does not constitute an endorsement or recommendation by the NCCMT. Reports included in this database: are categorized by submitting authors (systematic review; rapid review; evidence scan/summary); may or may not have undergone peer-review; and have not undergone critical appraisal for methodological quality by the NCCMT. The NCCMT recommends that users conduct critical appraisal of each report for use in decision making.

Search for...

Refine Results Expand All

Showing 21-40 (of 216 results)

◀ Previous Page 1 2 3 4 5 ... 11 Next Page ▶

Protective Factors for Indigenous Communities
What is known about protective factors that may help protect Indigenous communities from the COVID-19 pandemic and its impacts in Canada, and internationally?
Dr. Maureen Dobbins, National Collaborating Centre for Methods and Tools
Completed on 2020-10-16
NCCMT Rapid review Rapid review Completed

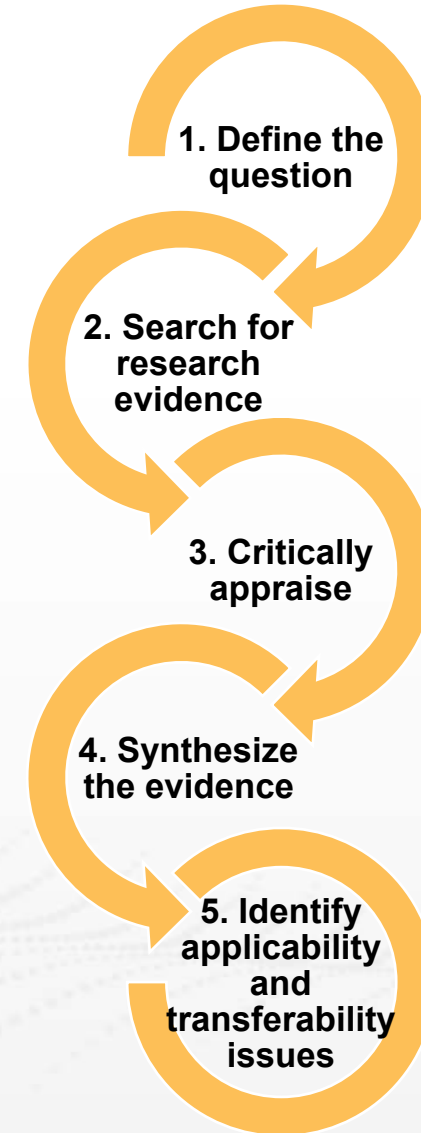
Schools measures on COVID-19
Quelle est l'efficacité des différentes mesures mises en place dans les établissements d'enseignement pour diminuer le risque d'infection avec le SARS-CoV-2 pour les élèves et les étudiants, ainsi que les enseignants?
Ilana Guentcheva, Centre de recherche en santé publique (CRéSP)
Completed on 2020-10-07

Rapid Evidence Service

- Urgent and ongoing need for synthesized evidence; little to no capacity among front line public health service delivery organizations
- Pivot from synthesis training and support to conducting evidence syntheses
- Response to public health decision makers' requests for evidence on priority public health questions

Methods: Rapid Evidence Service

- NCCMT prioritizes questions from received requests
- Modified steps from the *NCCMT Rapid Review Guidebook*
- “Relay race”
- Reviews completed within 5-10 days



Critical Appraisal

- By the end of April 2020, preprints accounted for approximately 40% of all English-language COVID-19 scientific work (Fraser, 2020)
- Few syntheses appraising evidence
- How to identify the most trustworthy findings?

NCCMT Approach

- Critical appraisal completed for included evidence
 - AMSTAR-1 Tool – Systematic Reviews
 - Joanna Briggs Institute Tools – All other study designs
 - Some exceptions
- Grading of Recommendations Assessment, Development and Evaluation (**GRADE**) approach rates overall certainty of the findings
 - How likely are the findings to change with more evidence?

Final Product

- Question
- Executive Summary
 - Key findings and certainty
 - What has changed (update)
 - Overview of evidence and knowledge gaps
- Methods
- Results
 - Tables



Rapid Review: What is known about the risk of COVID-19 transmission across different indoor settings in the community such as restaurants and gyms?

Prepared by: The National Collaborating Centre for Methods and Tools

Date: November 4, 2020

Suggested Citation:

National Collaborating Centre for Methods and Tools. (2020, November 4). *What is known about the risk of COVID-19 transmission across different indoor settings in the community such as restaurants and gyms*. <https://www.nccmt.ca/knowledge-repositories/covid-19-rapid-evidence-service>

Please Note: An update of this review may be available. Access the most current version of this review by visiting the National Collaborating Centre for Methods and Tools COVID-19 Rapid Evidence Service at the above link.

© 2020. National Collaborating Centre for Methods and Tools, McMaster University. All rights reserved.

The National Collaborating Centre for Methods and Tools (NCCMT) is hosted by McMaster University and funded by the Public Health Agency of Canada. The views expressed herein do not necessarily represent the views of the Public Health Agency of Canada.

This Rapid Review is for general information purposes only. The information provided in this Rapid Review is provided “as is” and McMaster University makes no warranties, promises and/or representations of any kind, expressed or implied, as to the nature, standard, accuracy, completeness, reliability or otherwise of the information provided in this Rapid Review, nor to the suitability or otherwise of the information to your particular circumstances. McMaster University does not accept any responsibility or liability for the accuracy, content, completeness, legality, reliability or use of the information contained in this Rapid Review.

The authors declare they have no conflicts of interest to report.

November 4, 2020

Dissemination: Rapid Evidence Service

- COVID-19 Rapid Evidence Service: nccmt.ca/res
- 52 reviews & updates on 27 unique questions (March 12 2021)
- New/updated reviews posted to the NCCMT's website
 - e-mail notifications
 - social media
 - monthly newsletter

The screenshot shows the website for the National Collaborating Centre for Methods and Tools (NCCMT) COVID-19 Rapid Evidence Service. The page is titled "COVID-19 Rapid Evidence Service" and includes a navigation menu with options like HOME, COVID-19, TRAINING, TOOLS, KNOWLEDGE REPOSITORIES, IMPACT, and ABOUT US. There is a "SUBSCRIBE TO NEWSLETTER" button in the top right. The main content area is divided into sections: "About", "Have a COVID-19 question?", "Want to know when a review is added or updated?", and "Looking for something else?". The "About" section describes the service's purpose and methodology. The "Have a COVID-19 question?" section includes a form for submitting questions and a "SUBSCRIBE" button. The "Looking for something else?" section features a search bar and a list of rapid reviews under the heading "Infection Prevention and Control".

National Collaborating Centre for Methods and Tools
Centre de collaboration nationale des méthodes et outils

School of Nursing | **McMaster University**

HOME COVID-19 TRAINING TOOLS KNOWLEDGE REPOSITORIES IMPACT ABOUT US SUBSCRIBE TO NEWSLETTER

COVID-19 Rapid Evidence Service

About

The National Collaborating Centre for Methods and Tools' (NCCMT) Rapid Evidence Service supports the public health sector's response to the COVID-19 pandemic. The Service answers priority COVID-19 questions from public health professionals with rapid reviews.

The NCCMT has answered questions from the Pan-Canadian Public Health Network's Special Advisory Committee and Technical Advisory Committee on COVID-19 and the Public Health Agency of Canada (PHAC). We have also supported other organizations at international, federal, provincial, territorial and local levels.

The Rapid Evidence Service team applies an internationally accepted rapid review methodology. The team begins by conducting a comprehensive search to find relevant evidence. Two raters then independently appraise the evidence for methodological quality and weigh the findings by quality. Finally, the team synthesizes the findings in plain language.

Priority topics are updated as capacity allows.

Have a COVID-19 question?

Submit your questions to the NCCMT's Rapid Evidence Service team at nccmt@mcmaster.ca.

Please note, questions are prioritized and completed as our capacity allows.

Want to know when a review is added or updated?

Enter your email below to receive notification of new or updated reviews.

Email

SUBSCRIBE

Looking for something else?

The NCCMT hosts rapid reviews on a variety of topics on our rapid review repository. [Click here](#) to go to the repository.

Search for...

Infection Prevention and Control

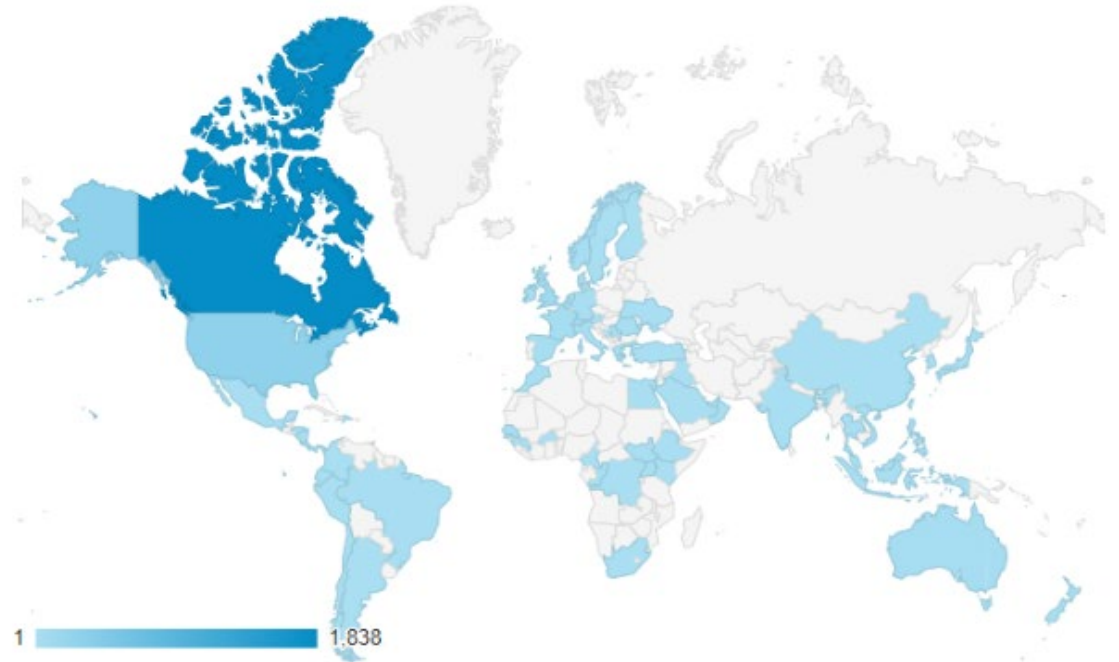
Rapid Review Update 9: What is the specific role of daycares and schools in COVID-19 transmission? (update in progress) Search Updated: October 13, 2020 Review Completed: October 22, 2020	Rapid Review: What risk factors are associated with COVID-19 outbreaks and mortality in long-term care facilities and what strategies mitigate risk? Search Updated: October 5, 2020 Review Completed: October 16, 2020	Rapid Review: What is known about best practices for infection prevention and control in inpatient psychiatric facilities? Search Updated: June 22, 2020 Review Completed: June 26, 2020
Rapid Review: What is known about the efficacy and cost-effectiveness of copper materials to reduce transmission of viruses? Search Updated: June 9, 2020 Review Completed: June 12, 2020	Rapid Review: What is the effectiveness of cohorting virus-positive residents to shared rooms in care facilities? Search Updated: June 9, 2020 Review Completed: June 12, 2020	

Disease Characteristics

Rapid Review Update 3: What is known on the potential for COVID-19 re-infection, including new transmission after	Rapid Review: What is known about how long the virus can survive with potential for infection on surfaces? (update in	Rapid Review: What is known about the incubation period for COVID-19?
--	--	--

Impact

- Over 10 000 page views since June 2020
- Priority questions from various organizations (e.g. the World Health Organization, Public Health Ontario, public health units, etc.)
- Collaborated with Public Health England on an update
- Email subscribers in all provinces and all but one territory
- Reviews indexed in various databases and updates
- Media coverage in over 30 outlets



Accessed in 69 countries as shown in the map above.

Conclusion & Implications

- Implementation of a strategy that resulted in rapidly coordinated efforts on a national scale
- Reduce duplication and disseminate quality evidence into the hands of decisions makers
- Continuous evolution of methods as COVID evidence changes
- Transitioning to training and supporting other organizations to conduct high quality rapid reviews



National Collaborating Centre
for Methods and Tools

Centre de collaboration nationale
des méthodes et outils



RES Team

Maureen Dobbins, RN, PhD

Sarah Neil-Sztramko, PhD

Susan Snelling, PhD

Emily Belita, RN, PhD

Emily Clark, MSc

Leah Hagerman, MPH

Izabelle Siqueira, MPH

Rachel Jansen, RN

Claire Howarth, MPH

Taylor Colangeli