

RISE

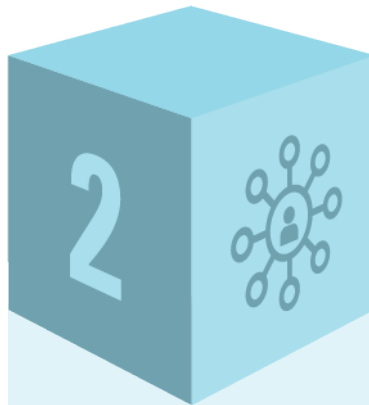
Building blocks #1 to #8

Ontario Health Teams will need to put in place eight OHT building blocks in order to become clinically and fiscally accountable for delivering a full and coordinated continuum of care to a defined population within Ontario.



Defined patient population

Who is covered, and what does 'covered' mean?



In-scope services

What is covered?



Patient partnership and community engagement

How are patients engaged?



Patient care and experience

How are patient experiences and outcomes measured and supported?



Digital health

How are data and digital solutions harnessed?



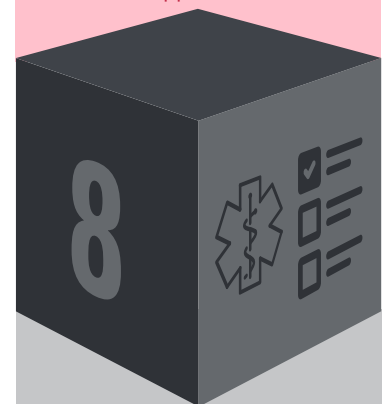
Leadership, accountability and governance

How are governance and delivery arrangements aligned, and how are providers engaged?



Funding and incentive structure

How are financial arrangements aligned?



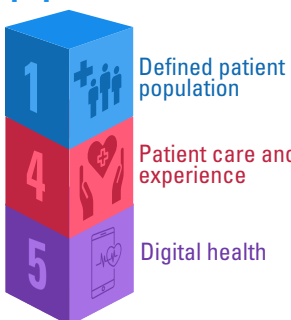
Performance measurement, quality improvement, and continuous learning

How is rapid learning and improvement supported?

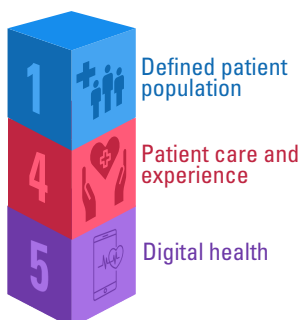
How the building blocks come together to advance population-health management (PHM)

Components from each of the eight building blocks can be used to support OHTs as they work through the five components of PHM.

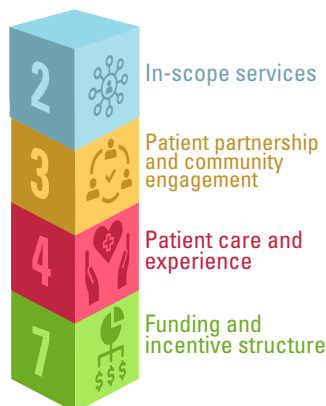
Identifying populations



Segmenting for needs, risks and barriers



Co-designing care models and service mix



Implementing and increasing reach



Monitoring and evaluating

