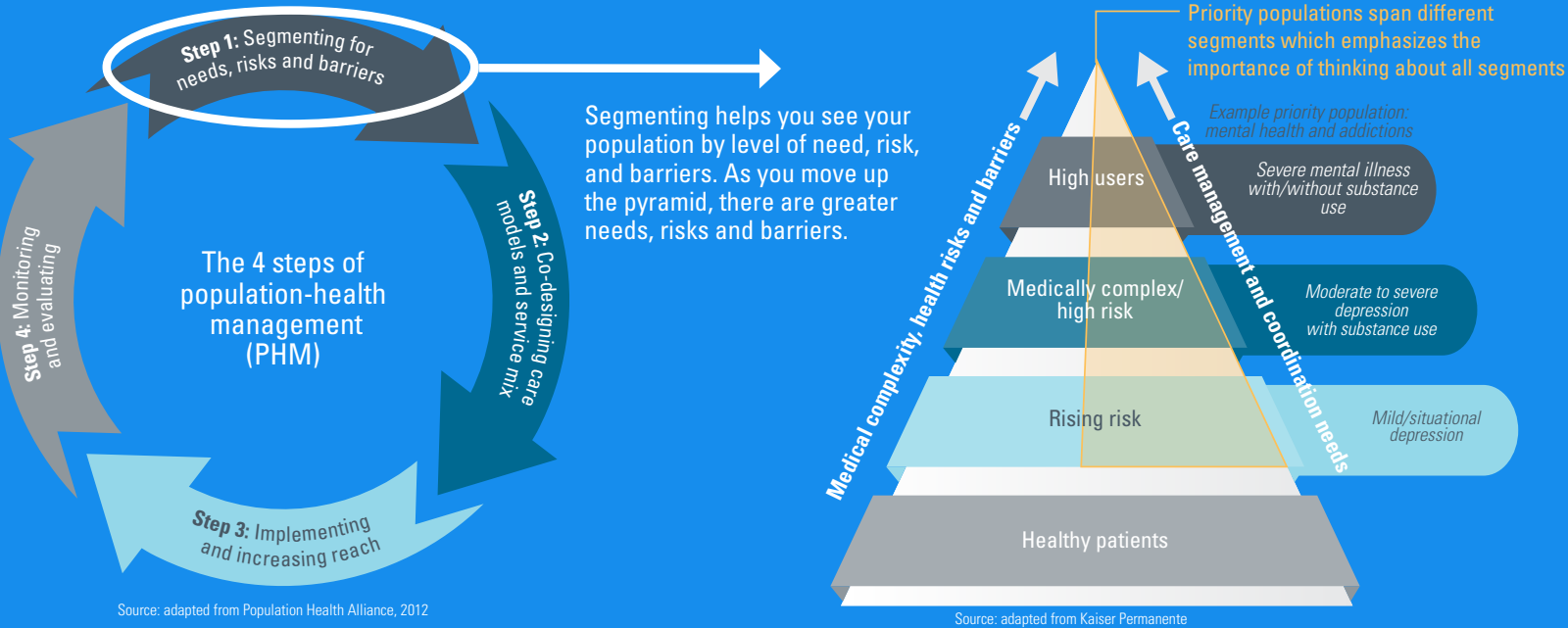


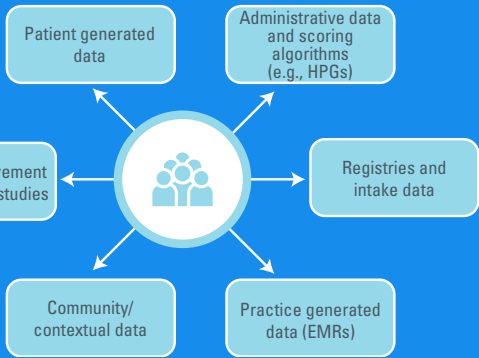
### Core concept and principles



### Data sources for Ontario Health Teams

Data are needed to segment and to actively manage the population. Looking at multiple sources is necessary for a holistic view.

Purpose of data	Support	Contact info
<b>Rapid learning and improvement in OHTs</b> (with near real-time data contributed by partners and linked longitudinally)	<a href="#">IDS</a>	Wendy Gerrie, <a href="mailto:gerriew@hpsc.ca">gerriew@hpsc.ca</a>
<b>Learning and improvement in OHTs</b> (delayed but comprehensive data linked longitudinally)	<a href="#">IntelliHealth</a>	<a href="mailto:intellihealthontario@ontario.ca">intellihealthontario@ontario.ca</a>
<b>Monitoring and quality improvement among primary-care practices</b> (with EMR data contributed by primary-care practices)	<a href="#">POPLAR</a>	<a href="mailto:info@poplarnetwork.ca">info@poplarnetwork.ca</a>
<b>Evaluation in primary care</b> (with ICES and other data)	<a href="#">INSPIRE</a>	Eliot Frymire, <a href="mailto:frymire@queensu.ca">frymire@queensu.ca</a>
<b>Evaluation focused on OHTs</b> (with ICES and other data)	<a href="#">HSPN</a>	<a href="mailto:oht.evaluation@utoronto.ca">oht.evaluation@utoronto.ca</a>
<b>Equity- and primary-care sensitive local maps of health-related data</b> (with ICES and other data)	<a href="#">OCHPP</a>	<a href="mailto:healthprofiles@smh.ca">healthprofiles@smh.ca</a>
<b>Population planning, evaluation and other data analytics support for OHTs</b>	<a href="#">ICES</a>	<a href="mailto:ahrq@ices.on.ca">ahrq@ices.on.ca</a>



See this [RISE RB8 on data analytics](#) for more sources of data

### Examples of segmentation approaches to Ontario Health Teams

**Muskoka and Area OHT**

**NORTH TORONTO**  
Ontario HealthTeam

**Where we started:** started by using the pyramid to decide where to focus and what activities to prioritize

**Where we want to go:** expand activities to the other segments of the pyramid – progressing to the bottom

**How we are getting there:** focusing on trust and partnerships, building a data infrastructure to make informed and coordinated decisions, and so much more

**Where we started:** started by prioritizing activities that were already happening and were aligned to our priority population

**Where we want to go:** continue using segmentation to identify what we should do in a proactive manner and expand to other segments of our priority population

**How we are getting there:** working with the data we have but also working on the long game (e.g. starting to work with primary care to create a central data repository)